

To Attach your Project

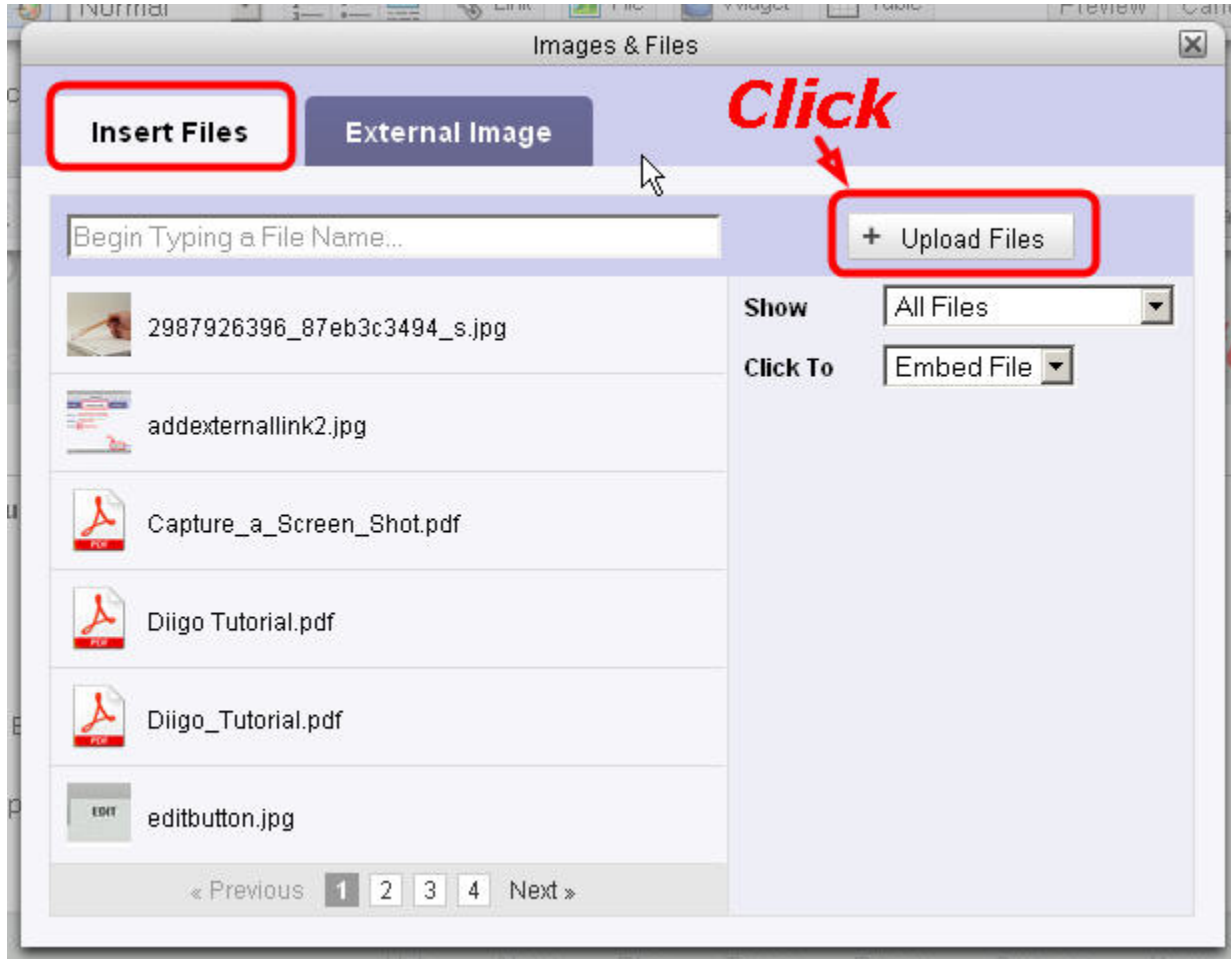


Click on the Edit link in the upper right corner.

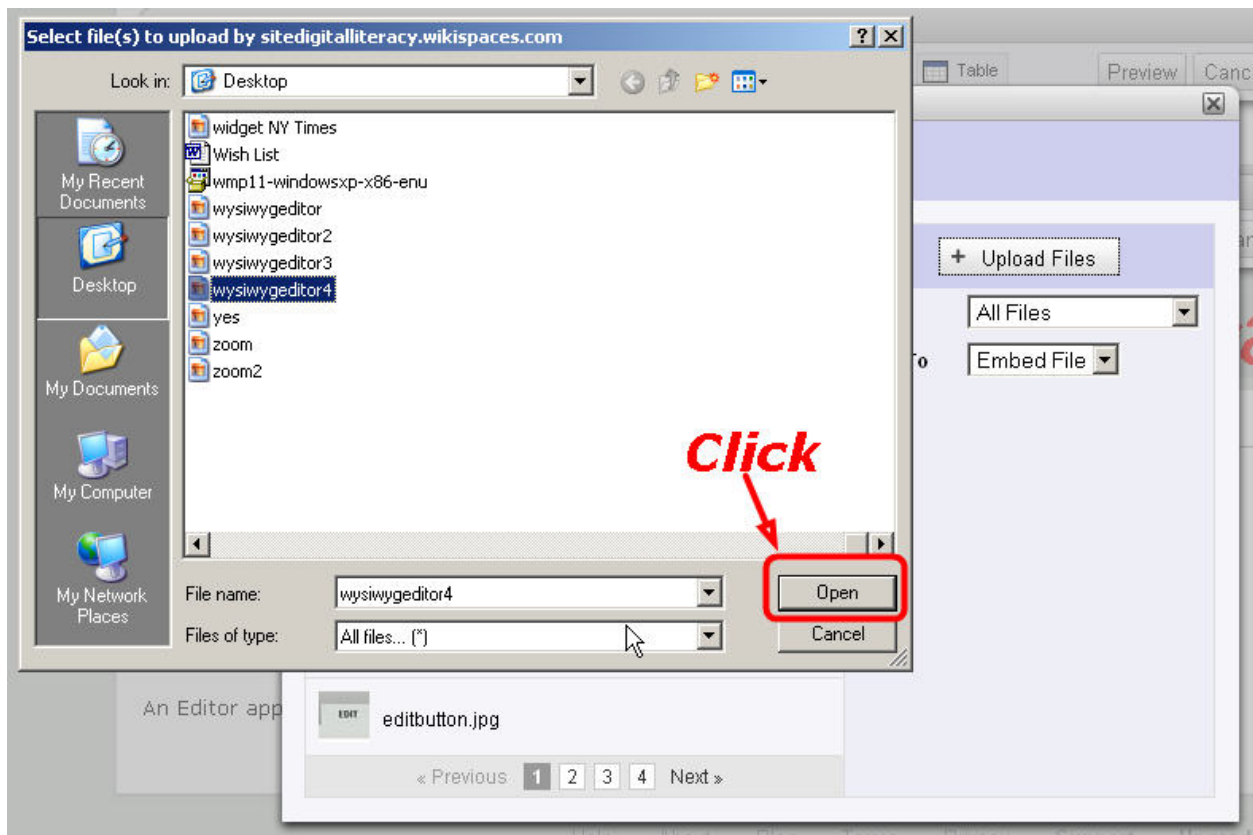
An Editor appears. Click on **File** in the Editor menu.



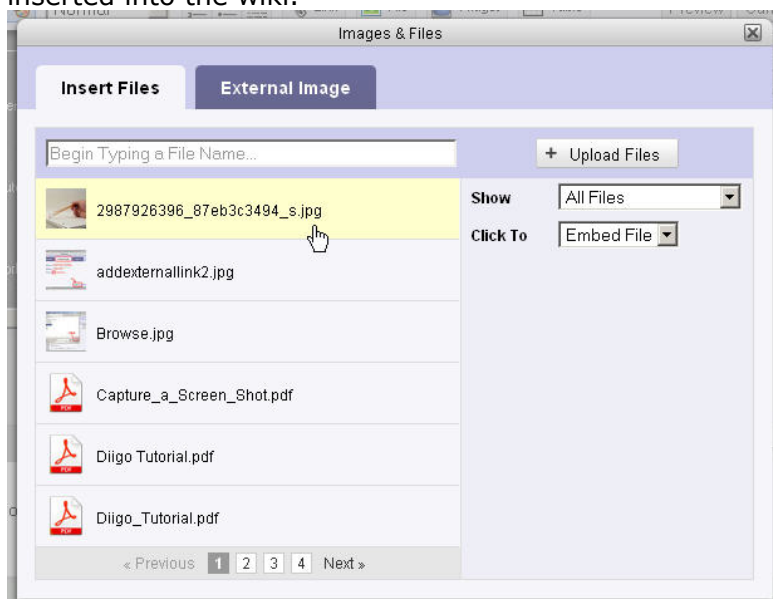
An Images and Files dialogue box appears. Click the **Insert File** tab. Click the **Upload File** button.



Browse to where you have stored the image on your computer. Click "Open".



The image now appears in the Images and Files dialogue box. Click on the image and it is inserted into the wiki.



Lastly save changes by clicking **Save** in the Editor Menu.

